

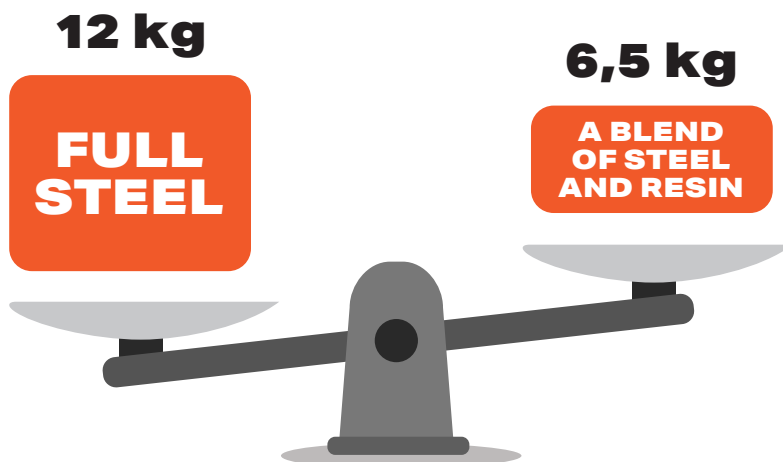
THE PRECISION  
OF THE TOOL  
IS THE PRECISION  
OF DETAIL

# HUMM MULTI

## LIGHT FIXING STRIPES












At JG Group we have created innovative fastening strips that connect a solid steel structure with a lightweight base made of a mixture of concrete and resin. Using this material, we reduced the weight of the system by approximately 45% while maintaining full stiffness and strength.

An additional advantage over traditional steel strips is excellent vibration damping during operation.



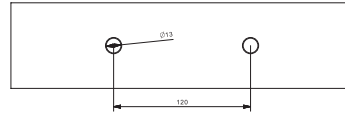
Comparison of the weight of the HM-450 strip in variants made of full steel and a mixture of steel and resin.

## WHAT MAKES OURS FIXING STRIPES SPECIAL?

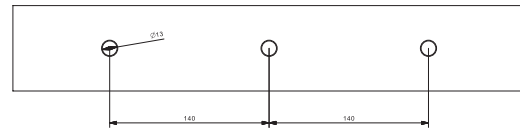
-  reduced weight of the strip by approximately 45% compared to the same strip made of steel
-  polyurethane filling that dampens vibrations
-  possibility of installing several elements at the same time
-  possibility of processing raw elements as well as pre-machined details
-  large range of detail clamping
-  jaws with replaceable inserts
-  quick attachment of the jaws to the strip with one screw
-  universality of use – for large and small elements
-  possibility of modular arrangement of strips next to each other or in an axis
-  mounting strips are ideal for both horizontal and vertical machining centers
-  possibility of adapting the base of the strip to the customer's needs

# FIXING STRIPES

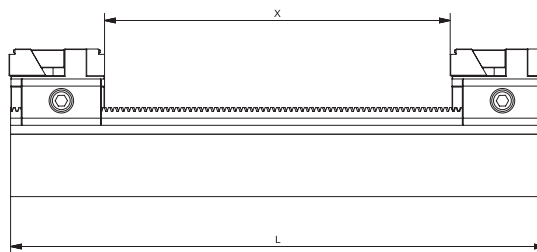
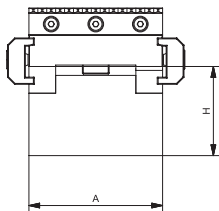
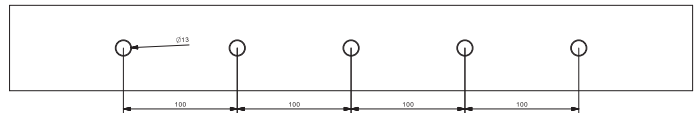
HM-300



HM-450



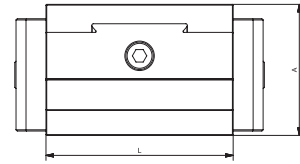
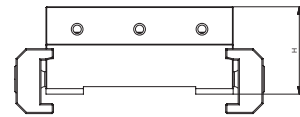
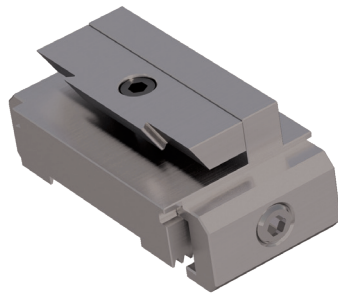
HM-600



STRIPE	L (mm)	A (mm)	H (mm)	Weight (kg)	X (mm)
HM-300	300	75	50	4,5	195
HM-450	450	75	50	6,75	345
HM-600	600	75	50	9	495

# UNIVERSAL JAW

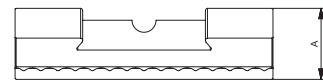
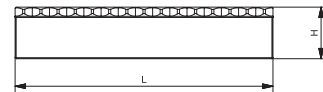
HMS-75



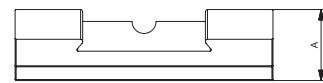
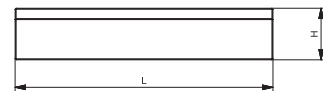
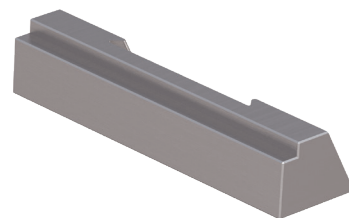
STRIPE	L (mm)	A (mm)	H (mm)	Weight (kg)
HMS-75	75	52,5	36	1

# MOVABLE JAWS INSERTS

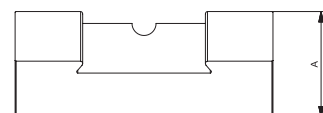
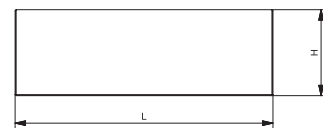
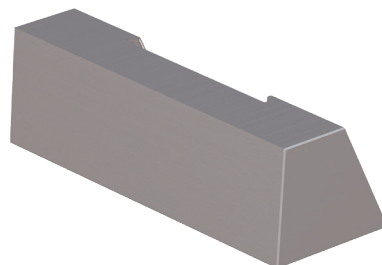
HMWr-z  
tooth insert



HMWr-g  
smooth insert



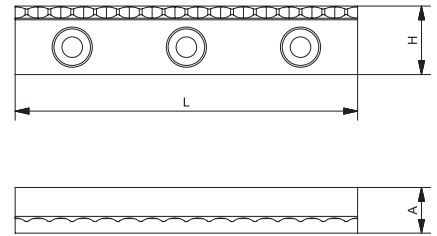
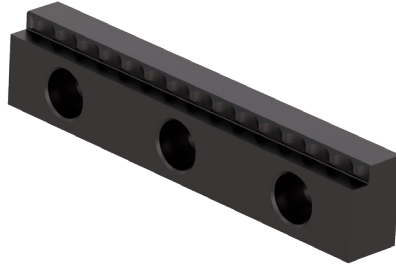
HMWr-f  
flat insert



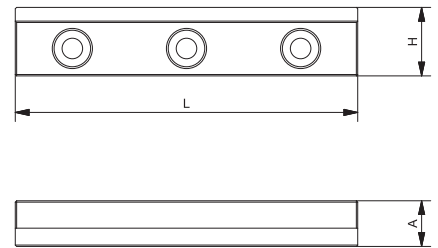
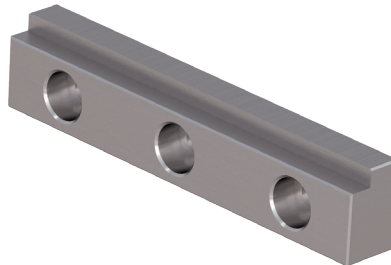
MOVABLE JAWS INSERTS	L (mm)	A (mm)	H (mm)	Weight (kg)
HMWr-z	75	20,5	15	0,12
HMWr-g	75	20,5	15	0,12
HMWr-f	75	30,5	25	0,18

# FIXED JAWS INSERTS

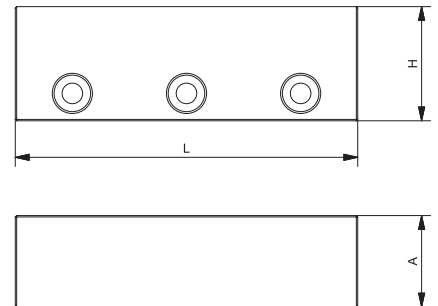
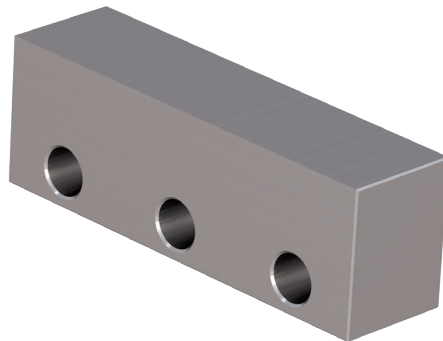
HMWs-z  
tooth insert



HMWs-g  
smooth insert



HMWs-f  
flat insert





FIXED JAWS INSERTS	L (mm)	A (mm)	H (mm)	Weight (kg)
HMWs-z	75	10	15	0,1
HMWs-g	75	10	15	0,1
HMWs-f	75	20	25	0,3






 [www.jg-group.pl](http://www.jg-group.pl)

 JG Group Sp. z o.o.  
Headquarters and Production Plant  
ul. Braci Krausse 4, 20-270 Lublin

 Office: +48 81 468 00 30  
Fax: +48 81 746 57 88

 [biuro@jg-group.pl](mailto:biuro@jg-group.pl)  
[info@jg-group.pl](mailto:info@jg-group.pl)

NIP: 9462678267 | KRS: 0000717020 | REGON: 369388478



DISTRIBUTORS:

