


TOOL PRECISION
IS DETAIL PRECISION

HUMM CLAMP

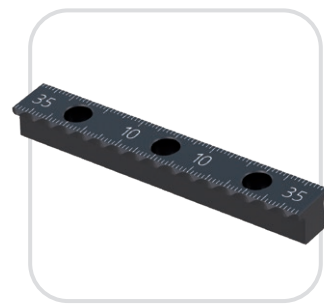
5-AXIS CENTRIC VISE

- 
- High clamping repeatability +/- 0.01
 - High clamping force of 35 kN
 - Jaw quick change/rotate system - no tools required
 - Guides to prevent lateral torsion of the jaws and blocking
 - No lifting of the jaws when tightening the detail
 - Shavings and coolant discharge holes
 - Working range: 0-95 mm and 93-180 mm
 - Possibility of assembling two details at the same time thanks to the application of the Central Jaw HCSC-125
 - No "blind spot" in jaw spacing
 - Central setting of the spindle screw
 - Hardened, ground body
 - Possibility of attaching to the table with clamps
 - Vise base compatible with ZeroPoint APS, WPS, ZeroAct, UNILOCK, QuickPoint Lang 96 mm
 - Various types of snap-on jaws

HUMM CLAMP

READY-MADE SETS

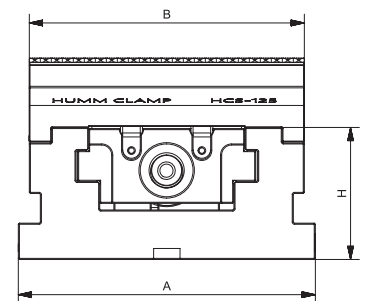
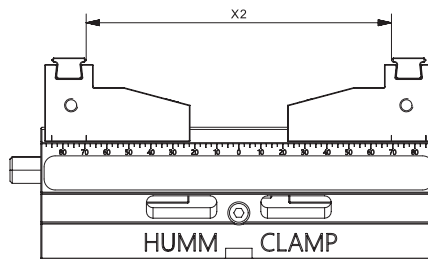
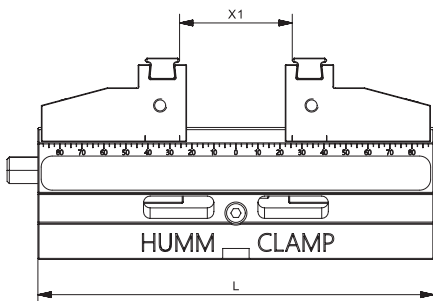
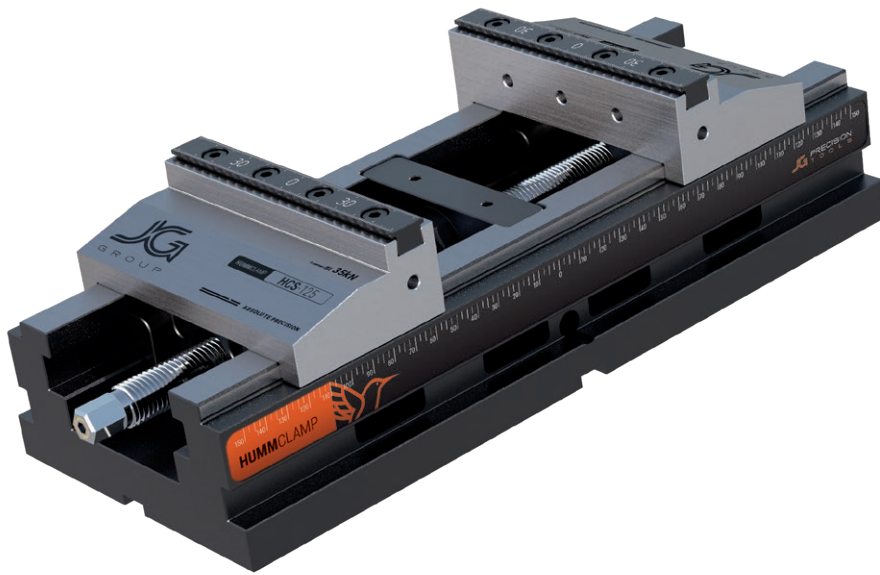
HC-80-SET



HC-125-SET

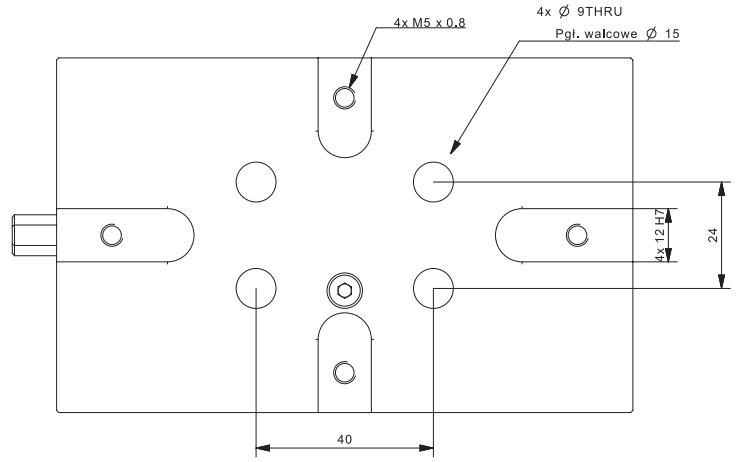


HC-125L-SET

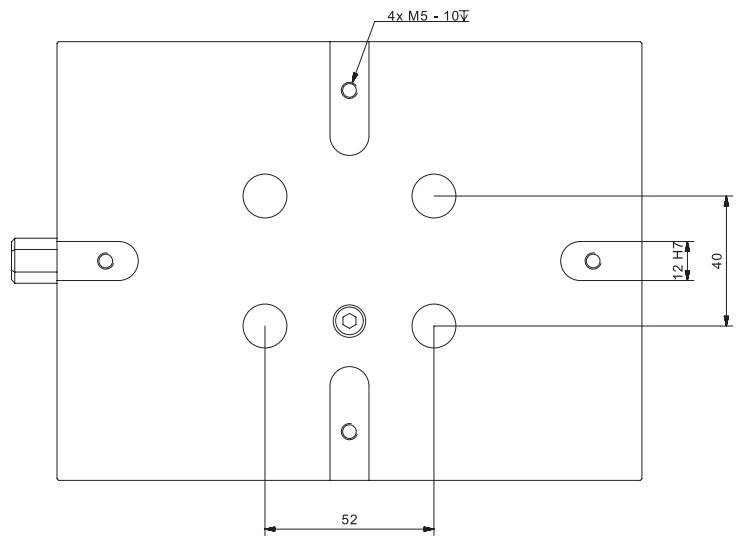


STOCK NO.	weight (kg)	L (mm)	H (mm)	A (mm)	B (mm)	X1 (mm)	X2 (mm)
HC-80	2,7	130	47	80	80	0-75	55-130
HC-125	8,4	180	60	135	125	0-95	93-180
HC-125L	13,2	320	60	135	125	0-195	93-290

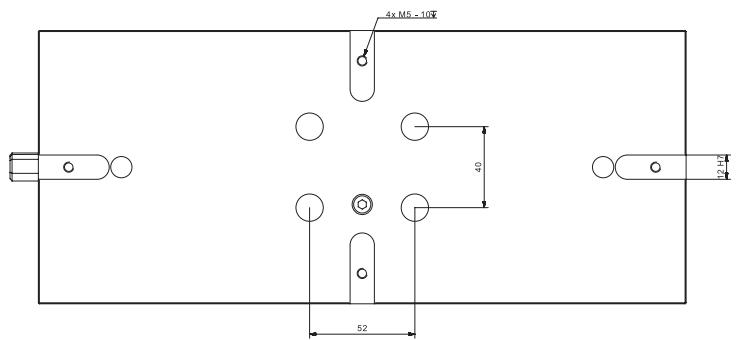
HC-80



HC-125

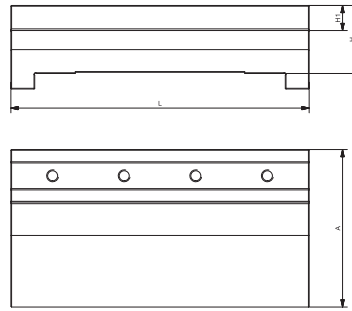


HC-125L

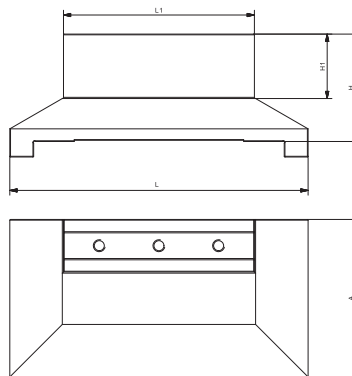


JAWS

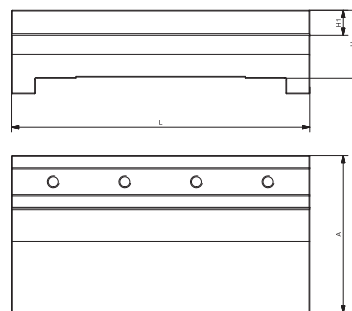
HCS-125



HCS-125-5X



HCS-125-W



STOCK NO.	weight (kg)	L (mm)	L1 (mm)	H (mm)	H1 (mm)	A (mm)	dedicated tooth inserts
HCS-80	0,3	80	-	20	8,5	42	HCW-80
HCS-80-W	0,45	80	-	35	23,5	42	HCW-80
HCS-80-5X	0,36	80	50	35	23,5	42	HCW-80-5X
HCS-125	1	125	-	28,5	10,5	66	HCW-125 HCW-125-2
HCS-125-W	1,32	125	-	45	27	66	HCW-125 HCW-125-2
HCS-125-5X	1,1	125	80	45	27	66	HCW-125-5X

SYSTEM JAWS

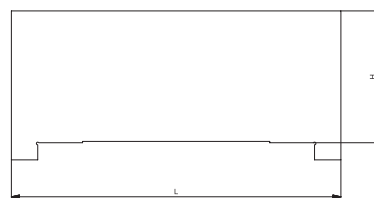
HCS-125-S



STOCK NO.	name	weight (kg)	L (mm)	H (mm)	A (mm)	dedicated tooth inserts
HCS-125-S	system	2,5	180	48	66	HCW-125-SU

FLAT JAW

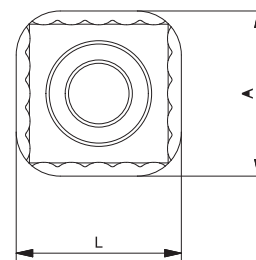
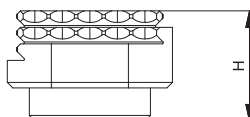
HCS-125-F



STOCK NO.	name	L (mm)	H (mm)	A (mm)
HCS-125-F	surowe	125	50	66
HCS-80-F	surowe	80	35	42

SYSTEM INSERTS

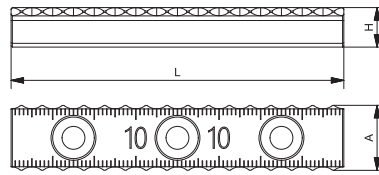
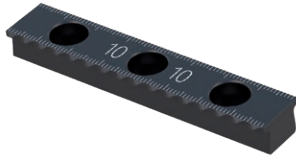
HCW-125-SU



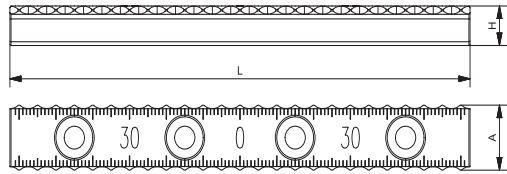
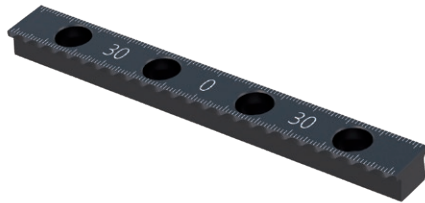
STOCK NO.	weight (kg)	L (mm)	H (mm)	H1 (mm)	A (mm)	fixing screws
HCW-125-SU	0,1	30	20	-	30	M10

TOOTH INSERTS

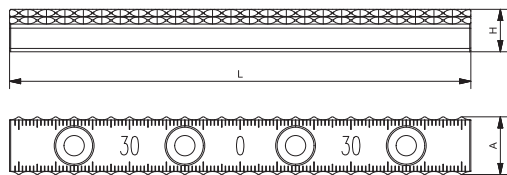
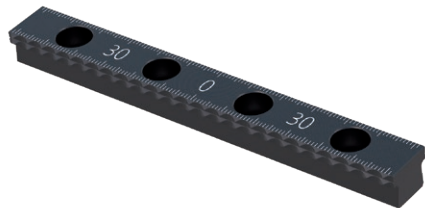
HCW-125-5X



HCW-125



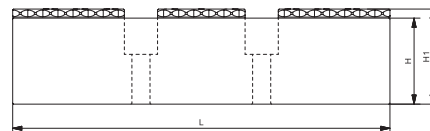
HCW-125-2
double
insert



STOCK NO.	weight (kg)	L (mm)	H (mm)	A (mm)	fixing screws
HCW-80	0,05	80	9,5	12,6	M3
HCW-80-W	0,05	80	9,5	12,6	M3
HCW-80-5X	0,03	50	9,5	12,6	M3
HCW-125	0,1	125	9,5	15,5	M5
HCW-125-W	0,1	125	9,5	15,5	M5
HCW-125-5X	0,1	80	9,5	15,5	M5
HCW-125-2	0,12	125	11,5	15,5	M5

HCSC-125 CENTERJAW WITH INSERT

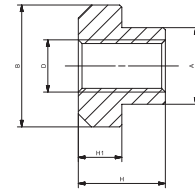
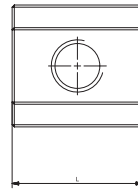
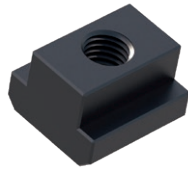
HCSC-125



STOCK NO.	weight (kg)	L (mm)	H (mm)	H1 (mm)	A (mm)	fixing screws
HCSC-125	0,7	125	28,5	31,5	25	M5

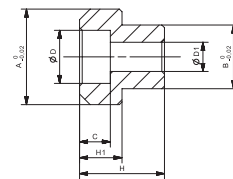
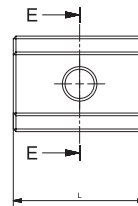
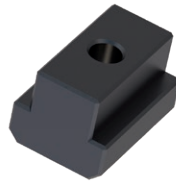
ADDITIONAL ACCESSORIES

HCAT T-stone



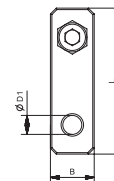
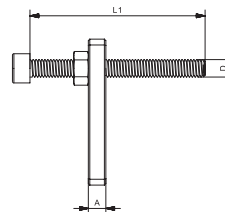
STOCK NO.	H	H1	A	B	D	L
HCAT-1	18	9	15,6	25	M12	27
HCAT-2	20	10	17,6	28	M12	30
HCAT-3	24	12	19,6	32	M12	32
HCAT-4	28	14	21,6	35	M12	36

HCAB base stone



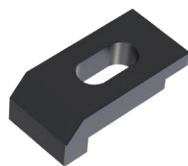
STOCK NO.	H	H1	A	L	fixing screws
HCAB-1	16	8	14	25	M5
HCAB-2	16	8	18	25	M5

HCAO resistance



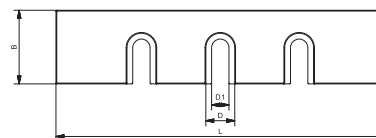
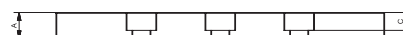
STOCK NO.	A	B	L	L1	ØD	ØD1
HCAO-1	6	15	50	60	M6	5,5

HCAL Clamp



STOCK NO.	A	B	L	C	D
HCAL-1	26	40	80	16,5	35

Overlay for HCAK jaws*





*possibility of making any size at the customer's request


STOCK NO.	A	B	L	C	D	D1
HCAK-1	10	28	125	6,8	11	6,6



 www.jg-group.pl

 JG Group Sp. z o.o.
Headquarters and Production Plant
ul. Braci Krausse 4, 20-270 Lublin

 Office: +48 81 468 00 30
Fax: +48 81 746 57 88

 biuro@jg-group.pl
info@jg-group.pl

NIP: 9462678267 | KRS: 0000717020 | REGON: 369388478



DISTRIBUTORS:

