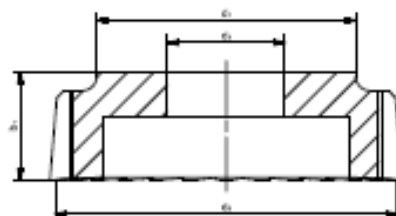
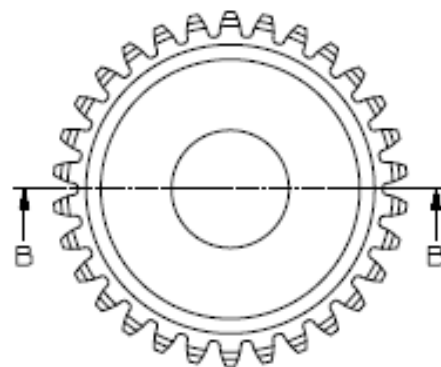


SHAPE+ PROFIL ZĘBA DIN 4458

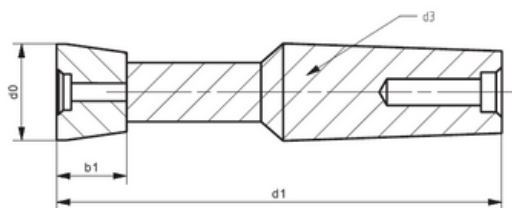
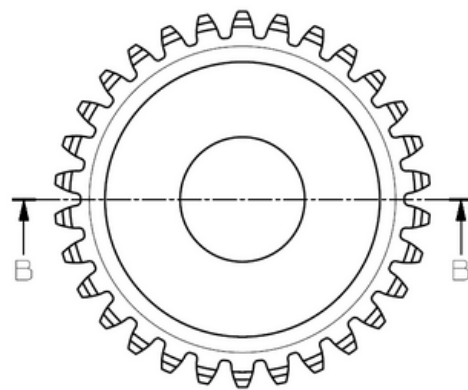
Kąt przyporu 20 stopni



| Module | z0 | d0 | d3 | d1 | b1 | Stock-No. |
|--------|-----|-----|-------|-----|----|--------------|
| 1,0 | 100 | 100 | 44,45 | 90 | 16 | RP.100.100.1 |
| 1,25 | 80 | 100 | | 90 | 16 | RP.125.080.1 |
| 1,25 | 100 | 125 | | 115 | 20 | RP.125.100.1 |
| 1,5 | 68 | 102 | | 90 | 18 | RP.150.068.1 |
| 1,5 | 84 | 126 | | 115 | 20 | RP.150.084.1 |
| 1,75 | 58 | 102 | | 90 | 20 | RP.175.058.1 |
| 1,75 | 72 | 126 | | 115 | 22 | RP.175.072.1 |
| 2,0 | 50 | 100 | | 85 | 20 | RP.200.050.1 |
| 2,0 | 64 | 128 | | 115 | 24 | RP.200.064.1 |
| 2,25 | 45 | 101 | | 90 | 20 | RP.225.045.1 |
| 2,25 | 56 | 126 | | 110 | 24 | RP.225.056.1 |
| 2,5 | 40 | 100 | | 85 | 20 | RP.250.040.1 |
| 2,5 | 50 | 125 | | 110 | 24 | RP.250.050.1 |
| 2,75 | 36 | 99 | | 85 | 24 | RP.275.036.1 |
| 2,75 | 46 | 127 | | 110 | 24 | RP.275.046.1 |
| 3,0 | 33 | 99 | | 85 | 24 | RP.300.033.1 |
| 3,0 | 42 | 126 | | 110 | 24 | RP.300.042.1 |
| 3,25 | 31 | 101 | | 85 | 24 | RP.325.031.1 |
| 3,5 | 29 | 102 | | 85 | 24 | RP.350.029.1 |
| 3,5 | 36 | 126 | | 110 | 24 | RP.350.036.1 |
| 3,75 | 27 | 101 | | 85 | 24 | RP.375.027.1 |
| 4,0 | 25 | 100 | | 80 | 24 | RP.400.025.1 |
| 4,0 | 32 | 128 | | 110 | 24 | RP.400.032.1 |
| 4,5 | 22 | 99 | | 80 | 24 | RP.450.022.1 |
| 4,5 | 28 | 126 | | 105 | 24 | RP.450.028.1 |
| 5,0 | 20 | 100 | | 80 | 24 | RP.500.020.1 |
| 5,0 | 26 | 130 | | 110 | 26 | RP.500.026.1 |
| 5,5 | 24 | 132 | | 110 | 26 | RP.550.024.1 |
| 6,0 | 17 | 102 | | 82 | 24 | RP.600.017.1 |
| 6,0 | 22 | 132 | | 110 | 26 | RP.600.022.1 |
| 6,5 | 16 | 104 | | 82 | 24 | RP.650.016.1 |
| 6,5 | 20 | 130 | | 105 | 26 | RP.650.020.1 |
| 7,0 | 18 | 126 | | 100 | 26 | RP.700.018.1 |
| 8,0 | 16 | 128 | | 100 | 31 | RP.800.016.1 |

SHAPE+ PROFIL ZĘBA DIN 4458

Kąt przyporu 20 stopni



| Module | z0 | d0 | d3 | d1 | b1 | Stock-No. |
|--------|----|------|-----|-----|----|-----------------|
| 1 | 10 | 10 | MK2 | 85 | 16 | JGRP.100.010.2 |
| 1 | 16 | 16 | MK2 | 100 | 23 | JGRP.100.010.2 |
| 1,25 | 10 | 12,5 | MK2 | 85 | 16 | JGRP.125.016.2 |
| 1,25 | 16 | 20 | MK2 | 100 | 23 | JGRP.125.010.2 |
| 1,5 | 10 | 15 | MK2 | 100 | 16 | JGRP.150.010.2 |
| 1,5 | 16 | 24 | MK4 | 150 | 23 | JGRP.150.016.2 |
| 2 | 10 | 20 | MK2 | 100 | 16 | JGRP.200.010.2 |
| 2 | 10 | 20 | MK4 | 180 | 16 | JGRP.200.010.2 |
| 2 | 16 | 32 | MK4 | 150 | 23 | JGRP.200.016.2 |
| 2,5 | 10 | 25 | MK2 | 100 | 16 | JGRP.250.010.2 |
| 2,5 | 16 | 40 | MK4 | 150 | 23 | JGRP.250.016.2 |
| 3 | 10 | 30 | MK4 | 150 | 16 | JGRP.300.010.2 |
| 3 | 10 | 30 | MK4 | 200 | 16 | JGRP.300.010.2L |
| 3 | 16 | 48 | MK4 | 150 | 23 | JGRP.300.016.2 |
| 3 | 16 | 48 | MK4 | 200 | 23 | JGRP.300.016.2L |
| 4 | 12 | 48 | MK4 | 150 | 18 | JGRP.400.012.2 |
| 4 | 12 | 48 | MK4 | 200 | 18 | JGRP.400.012.2L |
| 5 | 12 | 60 | MK4 | 150 | 18 | JGRP.500.012.2 |